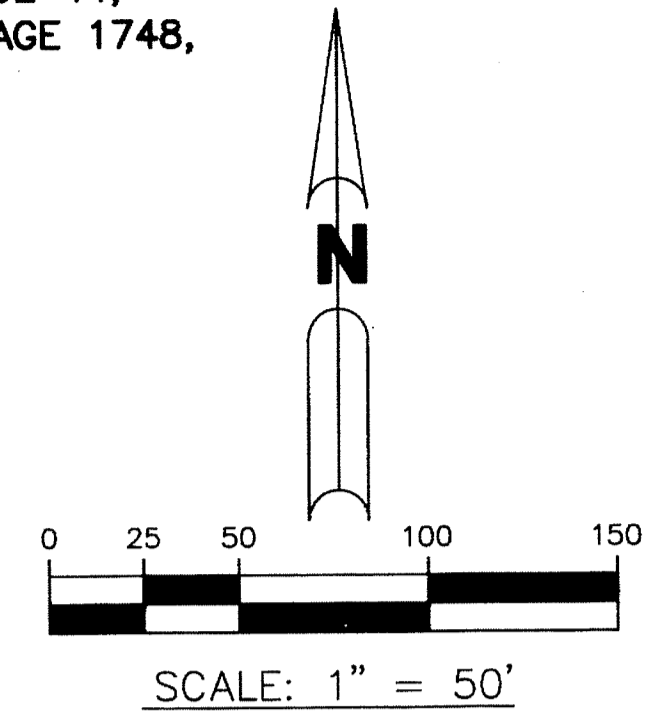
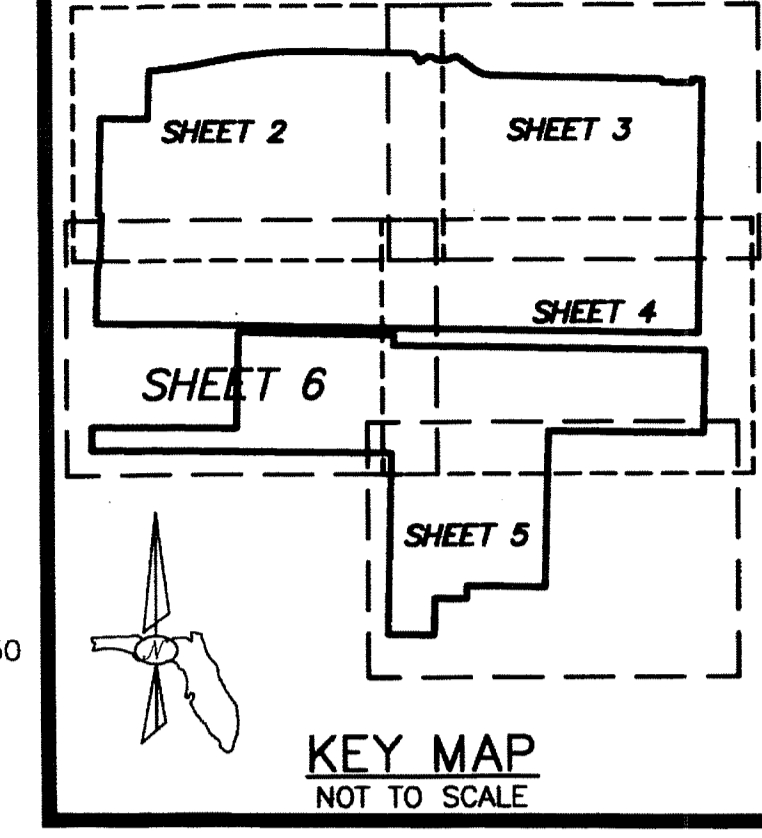


NORTHWOOD UNIVERSITY

LYING IN SECTION 24 TOWNSHIP 43 SOUTH, RANGE 42 EAST, CITY OF WEST PALM BEACH, PALM BEACH COUNTY, FLORIDA;
 A REPLAT OF "F.E.C. RWY. CO. R/W", MILITARY PARK HALLS ADDITION, RECORDED IN PLAT BOOK 12, PAGE 44;
 AND A REPLAT OF TRACT "A" OF MINOR SUBDIVISION PLAT, RECORDED IN OFFICIAL RECORD BOOK 12619, PAGE 1748,
 OF THE PUBLIC RECORDS OF PALM BEACH COUNTY, FLORIDA
 SHEET 6 OF 6

50



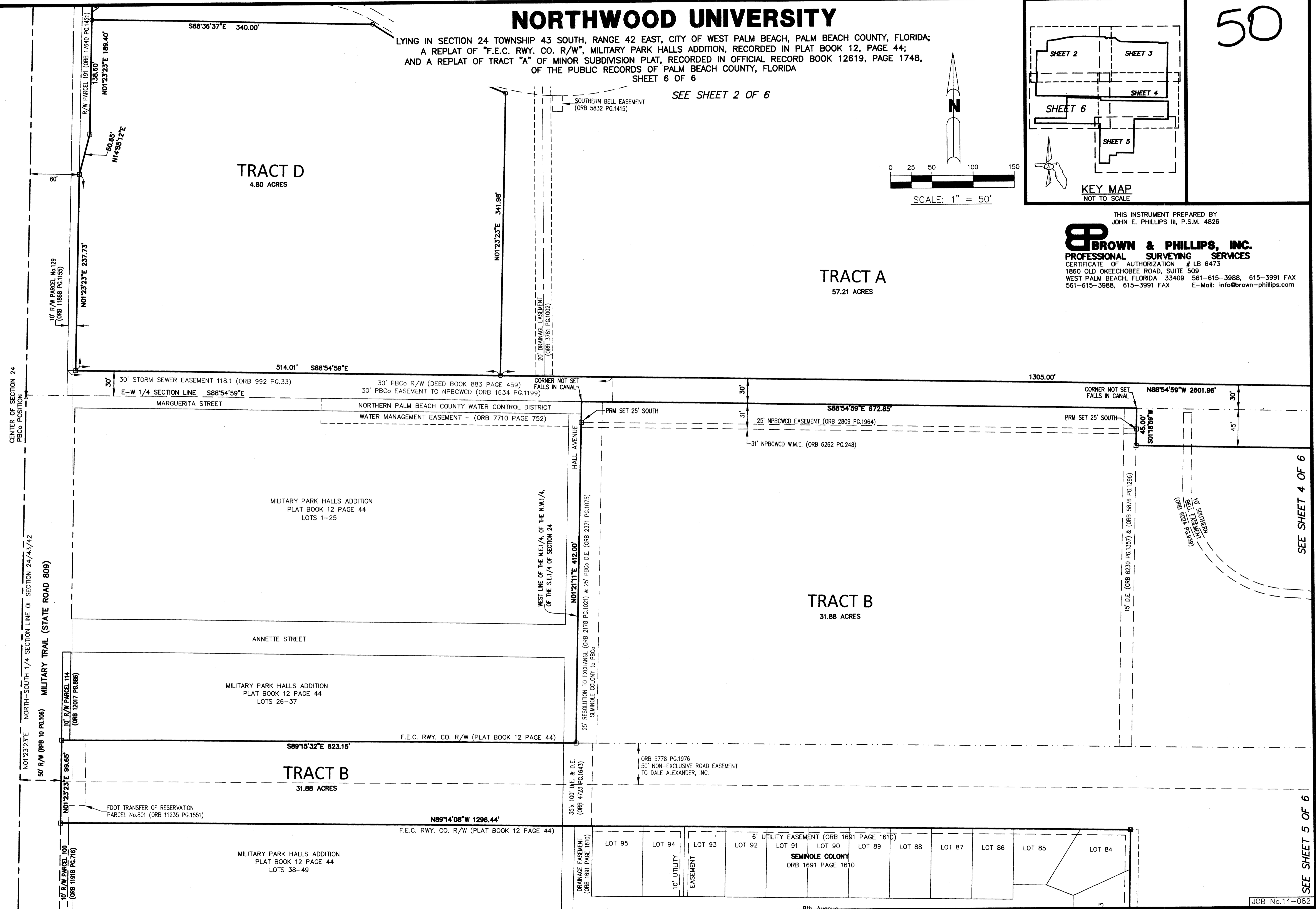
SEE SHEET 2 OF 6

TRACT D
4.80 ACRES

TRACT A
57.21 ACRES

TRACT B
31.88 ACRES

TRACT B
31.88 ACRES



THIS INSTRUMENT PREPARED BY
 JOHN E. PHILLIPS III, P.S.M. 4826

BROWN & PHILLIPS, INC.
PROFESSIONAL SURVEYING SERVICES

CERTIFICATE OF AUTHORIZATION # LB 6473
 1860 OLD OKEECHOBEE ROAD, SUITE 509
 WEST PALM BEACH, FLORIDA 33409 561-615-3988, 615-3991 FAX
 561-615-3988, 615-3991 FAX E-Mail: info@brown-phillips.com